

Help the Planet Choose a Real Christmas Tree

What cleans the air we breath, stabilizes the soil on Earth, protects our drinking water supply, and acts as a natural animal habitat?

A real Christmas tree, of course!



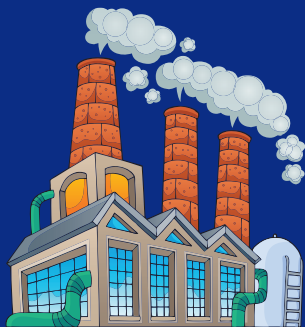
Let's clear the air

One acre of real Christmas trees consumes about 500 pounds of carbon dioxide each year. That's equivalent to the amount of carbon dioxide produced by driving a car 26,000 miles (roughly from here to California and back again 10 times).

That same acre of Christmas trees also produces about 1000 pounds of oxygen annually - the amount that 18 people need to breathe in a year. All together, New York State's 18,634 acres of Christmas trees provide enough oxygen for over 335,000 people - every person who lives in Syracuse plus many of the surrounding towns!



Real Christmas trees help to reduce air pollution by removing airborne dust, pollen, ash, and smoke that can damage human lungs. Trees trap pollutants in their needles and branches; and then the particles are washed to the ground by rainfall.



Nurturing by nature



Planting and growing Christmas trees can help to stabilize soil that would not normally support other crops. Wood chips or mulch from recycled Christmas trees help to hold moisture in the dirt around plants and prevent erosion. And as it breaks down, the tree mulch literally helps to produce new soil!

Real Christmas trees provide shelter for wildlife including songbirds, rabbits, and foxes. Birds such as cardinals and warblers build their nests and raise their young in the branches of spruce and fir trees. Cottontail rabbits hide from predators underneath protective low-growing tree branches.

Christmas tree farms, like other farms in New York State, provide important open space. These scenic green belts also serve as much-needed habitat for a variety of insects and wild animals.



CHRISTMAS TREE FARMERS
ASSOCIATION OF *New York*

WWW.CHRISTMASTREESNY.ORG